



# **TOUR DE BLOOM OMNIUM TECH GUIDE**

## **MAY 6-7, 2017**

**USAC permit 2017-930**

Welcome riders!

Wenatchee Valley Velo Club wants to extend a huge welcome to the 2017 Tour de Bloom Omnium! We hope you enjoy the events and get a chance to take in other attractions and sights — including the valley's famous Apple Blossom Festival and Leavenworth's Bavarian Village.

Your participation benefits our kids' riding safety program, Lids for Kids, putting 500 bike helmets on children, and also signage for a bike route from Leavenworth to Wenatchee.

The Tour De Bloom Omnium, as it has for several years now, will include the Mission Ridge Hill Climb on Saturday morning, May 6, the Downtown Wenatchee Criterium on Saturday afternoon and evening, May 6, and the Waterville Road Race on Sunday, May 7.

We are again offering free entries to all junior racers in the Omnium!

We've also expanded Tour de Bite & Brew along the Downtown Wenatchee Criterium course. This festive scene, which includes beer gardens and restaurant fare, has proven to be a bit hit for spectators and delivered a lot of energy to 'The Fastest Crit in the West!'

In addition to this tech guide and our website, you can find information on our Facebook page at <https://www.facebook.com/TourDeBloom>. If we can be any help, please don't hesitate to contact us.

Best regards,

Ace Bollinger  
Tour de Bloom - Race Director

Fred Munson  
Wenatchee Valley Velo Club President



## GENERAL INFORMATION

The **Tour de Bloom Omnium** is a D-ranked, 2-day, 3-race event held in the Greater Wenatchee Area and adjoining Douglas County. As the Tour de Bloom name hints at, the event is held during the community's famous Apple Blossom Festival. The Mission Ridge Hill Climb is held between Squilchuck State Park and Mission Ridge Ski & Board Resort. The Biosports Twilight Criterium takes place in downtown Wenatchee. And the Pro Build Road Race unfolds among the rolling wheat fields near Waterville.

### RACE COMMITTEE

**Race director:** Ace Bollinger

**Sponsoring team:** Wenatchee Valley Velo

**Co-race coordinators:** Ace Bollinger, Lars Hakensen, Steve Johnston, Craig Still

**Registration coordinator:** Amber Bollinger

**Medical coordinator:** Tom Ettinger

**Sponsorship coordinator:** Ace Bollinger

**Course set-up coordinator:** Craig Still, Lars Hakensen, Mike Mandoli

**Leavenworth Road Race coordinator:** Ace Bollinger

**Hill Climb coordinator:** Steve Johnston

**Criterium coordinator:** Craig Still

**Waterville Road Race coordinator:** Evan Plews, Lars Hakensen

**Team housing:** Lars Hakensen

**Timing:** GC Racing

## RACE HEADQUARTERS

Arlberg Sports  
Grand Central Building  
25 N. Wenatchee Ave.  
Wenatchee, WA 98801

## RESTAURANTS

The Wenatchee Valley features dozens of restaurants and cafes. Our featured restaurants for Tour de Bloom are:

Garlini's Napoletana  
212 Fifth St.  
Wenatchee  
(509) 884-1707  
<http://garlinisrestaurant.com/>

O'Grady's Pantry  
7375 Icicle Road  
Leavenworth  
(509) 888-9019  
<https://www.sleepinglady.com/ogradys-pantry.php>

McGlinn's Public House  
111 Orondo Ave.  
Wenatchee  
(509) 663-9073  
<http://www.mcglinns.com>

Icicle Brewing Co.  
935 Front St.  
Leavenworth  
(509) 548-2739  
<http://www.iciclebrewing.com/>

Wok-About Grill  
110 N. Wenatchee Ave.  
Wenatchee  
(509) 662-1154  
<http://www.wokaboutgrill.com/>

Wok-About Grill  
920 Front St.  
Leavenworth  
(509) 548-9652  
<http://www.wokaboutgrill.com/>

Please help us help our supporters and frequent these restaurants! They support our weekend of racing.

## PARKING

There is ample off-street parking at our three omnium venues. You will find parking available, with a Discover Pass, at Squilchuck State Park for our Hill Climb. (You can obtain a [Discover Pass here!](#)) On race day, there also will be a state ranger selling passes AND handing out fines to those who do not have a pass. For the Criterium, there are free lots a block east of the course. For the Road Race in Waterville, there is parking across from the Douglas County Fairgrounds.

## OTHER ATTRACTIONS

For other things to do and see while in the Wenatchee area, please visit <http://wenatchee.org/> and <http://leavenworth.org>

## TOUR DE BITE & BREW

Along the Tour de Bloom Criterium course, a series of beer gardens and restaurant's — dubbed "Tour de Bite & Brew" — will feature regional craft beers and the best "bites" from select downtown Wenatchee restaurants. Be listening for the cowbells as you pass by!

## WEATHER

Sunshine is the norm in early May in the Wenatchee Valley due to our location along the east slopes of the Cascades. Conditions can vary widely, however. Please be prepared for whatever Mother Nature throws at us by having access to clothing fit for any type of weather. Keep in mind, too, that the Hill Climb finishes at Mission Ridge (elevation 4,200 feet). Here is the Mission Ridge website: <http://www.missionridge.com/>

## RACE CATEGORIES — OMNIUM

CATEGORY	FIELD LIMIT
Cat 4/5 Men	50
Cat. 3/4/5 Women	50
Masters Men 40+ Cat 4/5	50
Junior Women 15-18	20
Junior Women 10-14	20
Junior Men 15-18	20
Junior Men 10-14	20

**Note:** Tour de Bloom may combine or cancel categories within the omnium and reduce the prize list if there are fewer than 15 riders for cash paying fields, fewer than 10 for all other senior and master races, and fewer than five for junior races. This can be changed at the Chief Ref, and Race Director's discretion.

## **RIDER PACKET “DAY OF” REGISTRATION, PACKET PICKUP AND CHECK-IN — OMNIUM**

Rider's licenses will be checked prior to picking up race packets, bib numbers, and other info. Everyone is required to check in at packet pickup and sign the USA Cycling Competitive Release Form. All juniors must have a parent sign a USAC release form.

One-day licenses will be available at packet pickup for Cat 5 women and Cat 5 men. All international riders with a UCI license from another National Federation will be permitted to race. Your registration acknowledges that you have read this tech guide.

### **Tour de Bloom Day Before Registration and packet pickup**

Friday, May 5, 2017

5 to 7 p.m.

Arlberg Sports

25 N. Wenatchee Ave.

Wenatchee, WA 98801

### **Mission Ridge Hill Climb day-of Registration and packet pickup**

Saturday, May 6, 2017

7 a.m. to 9 a.m.

Squilchuck State Park Lodge

Intersection of Squilchuck Road and Mission Ridge Road

Wenatchee, WA 98801

### **Downtown Wenatchee Criterium day-of Registration and packet pickup**

Saturday, May 6, 2017

2 to 3:30 p.m.

Registration table at Arlberg Sports

25 N. Wenatchee Ave.

Wenatchee, WA 98801

### **Waterville Road Race day-of Registration and packet pickup**

Sunday, May 7, 2017

7 to 8 a.m.

Douglas County Fairgrounds

601 N. Monroe St.

Waterville, WA 98858

## **NUMBER PLACEMENT**

Race bib numbers will be provided to Tour de Bloom riders. One number will be placed on the left-hand side of the rider and one on the right-hand side.

Riders must ensure that their hair does not cover the bib number. Riders with race numbers that are cut, folded, mutilated, badly positioned, or covered shall be subject to penalties outlined in USAC Rule 8A1(j) and are further subject to the following time penalties:

- 1st warning: 10 points
- 2nd warning: 20 points
- 3rd warning: 30 points

## **TECHNICAL SUPPORT**

See Wheel Support Procedures for individual races.

## **RESULTS**

Results will also be posted on location of the Downtown Criterium and Waterville Road Race. The Hill Climb Results Final Omnium classification results will be posted at the start of the Criterium. Also results will be found at <http://gcracingllc.com/> and [www.tourdebloom.com](http://www.tourdebloom.com)

## **PROTESTS**

Any protests other than on the order of finish must be submitted in writing, accompanied by \$20, and filed with the Chief Referee. Protests concerning placing or order of finish must be submitted in writing to the Chief Judge. (see page 3) Protests must be presented within the following deadlines:

- (a) Concerning placing: no later than the close of sign-in for the next stage;
- (b) Concerning an incident during the race: no later than one hour after the finish;
- (c) Concerning the final general classification: up to 15 minutes after the official announcement of posting the final GC results; It is the riders' responsibility to check results and bring any issues up to the Chief Judge immediately.

## **RACE INCIDENTS**

A rider who suffers a mishap in any of the races will be given the same time as the last place finisher in their respective category, and will be allowed to continue in the competition. A rider who suffers a recognized mishap by the Pit official after free laps have expired in the Race Criterium will be given the same finish time as if the mishap had not occurred and will be placed at the end of any group with which he was riding at the time of the mishap. All race mishaps will be discussed by the race director and the head referee. Their decision is final.

## **OVERALL OMNIUM CLASSIFICATION**

Omnium Classification will be determined by points accumulated throughout the Tour de Bloom Omnium.

Below is the points schedule for each race and time bonuses that will be awarded during the Criterium.

## POINTS SCHEDULE

PLACE	POINTS
1st	125
2nd	115
3rd	105
4th	100
5th	95
6th	90
7th	85
8th	80
9th	75
10th	70
11th	65
12th	60
13th	55
14th	50
15th	45
16th	40
17th	35
18th	30
19th	29
20th-29th	15
30th-39th	10
40th-49th	5
50th-100th	1

## AWARDS FOR TOUR DE BLOOM OMNIUM

Podium finishes will be recognized after each race. Here is the schedule:

**Hill Climb** — 11 a.m. at Squilchuck State Park Lodge

**Criterion** — Immediately following races at start/finish area on Wenatchee Avenue.

**Road Race** — A half-hour after each race finishes at the Douglas County Fairgrounds in Waterville. Awards will be presented at the conclusion of the event on Sunday.

## PRIZE LIST — FOR OMNIUM

For the three races and Omnium Classification.

CATEGORY	1	2	3	4	5	TOTAL
Cat 4/5 Men	Prizes \$815 cash value (top 3 places)					
Masters Men 40+ Cat 4/5	Prizes \$815 cash value (top 3 places)					
Junior 10-14, 15-18 Men & Women	Prizes \$815 cash value (top 3 places)					
Cat. 3/4/5 Women	Prizes \$815 cash value (top 3 places)					

**NOTE:** Tour de Bloom may combine or cancel categories and reduce the prize list if there are fewer than 15 riders for cash paying fields, fewer than 10 for all other senior and master races, and fewer than five for junior races. This can be changed at the race director and chief ref's discretion.

# 2017 TOUR DE BLOOM OMNIUM

## RACE 1: MISSION RIDGE HILL CLIMB

The Hill Climb features one of the more unique courses in the Pacific Northwest — a climb of 1,850 vertical feet over 4.25 miles, ending at the Mission Ridge ski resort in the Wenatchee National Forest. Along the way, riders will encounter several technical turns.

### DATE

Saturday May 6, 2017

### LOCATION (START AND RIDER SIGN-IN)

Squilchuck State Park, basement of the park lodge, 8 miles southwest of Wenatchee, Intersection of Squilchuck Road and Mission Ridge

### Mission Ridge Hill Climb day-of Registration and packet pickup

Saturday, May 6, 2017

7 a.m. to 9 a.m.

Squilchuck State Park Lodge

Intersection of Squilchuck Road and Mission Ridge Road Wenatchee, WA 98801

***Road Sign in: At start, 15 minutes prior to start time.***

### DRIVING DIRECTIONS

The Hill Climb takes place at about the same time that the Apple Blossom Festival Grand Parade occurs in downtown Wenatchee. To avoid the heavy traffic congestion and closed streets, riders should utilize Highway 28 in East Wenatchee to reach Squilchuck State Park. Whether coming from the north or south, Highway 28 leads to the George Sellar Bridge. Cross the bridge and then take a left onto Mission Street. Continue south for one mile as Mission Street turns into Squilchuck Road. After seven miles, you will reach the Hill Climb start area at Squilchuck State Park. You must have a Discover Pass to park a vehicle at Squilchuck State Park!

### START TIMES

These are approximate start times for Saturday, May 6, 2017. The actual start times will be published online by 4 p.m. Friday, May 5, and posted at check-in.

CATEGORY	START
Cat. 4/5 Men & Junior 15-18 Men & Masters Men 40+ Cat 4/5	10:15 a.m.
Cat. 3/4/5 Women & Junior 15-18 Women	10:25 a.m.
Junior 10-14 Men & Women	10:30 a.m.

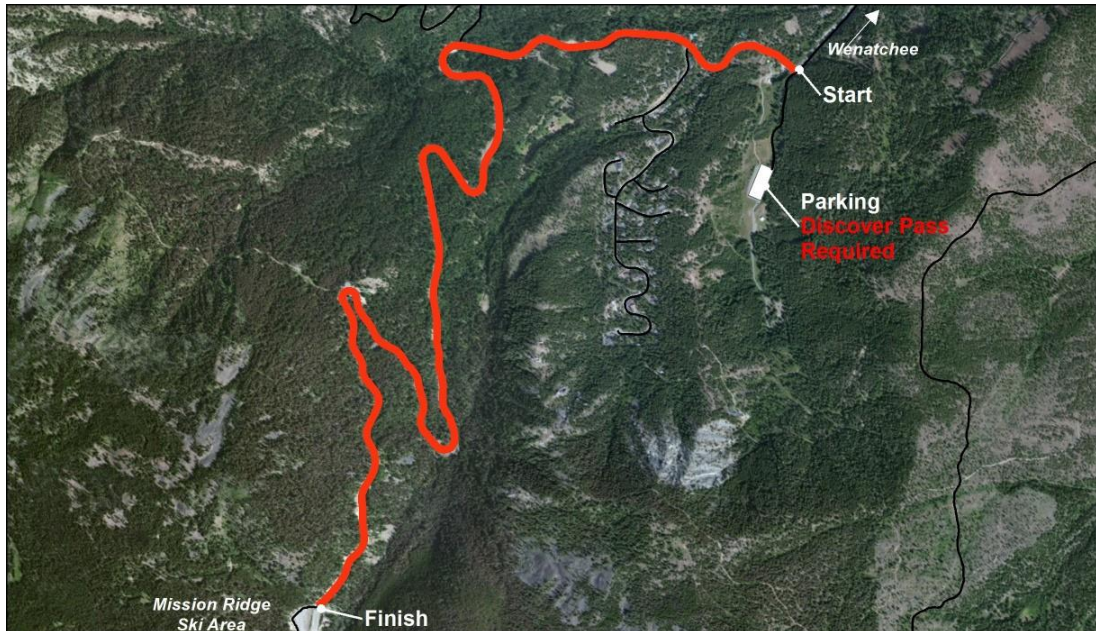
**NOTE:** Podiums starting at 11 a.m. Saturday, May 6, at Squilchuck State Park Lodge.



## RACE NOTES

- This is an open road with normal traffic, the centerline rule will be strictly enforced.
- Please use caution descending back to the parking lot from Mission Ridge and obey the posted speed limit.
- Time deduction can be enforced if descending too fast.

## COURSE MAP FOR HILL CLIMB



## **RACE 2: BIOSPORTS DOWNTOWN WENATCHEE TWILIGHT CRITERIUM**

The Criterium takes place in the heart of historic downtown Wenatchee over a six-block loop. The start and finish is on Wenatchee Avenue, between Palouse and First streets.

### **DATE**

Saturday May 6, 2017

### **LOCATION (START, FINISH AND RIDER SIGN-IN)**

Wenatchee Valley Velo Club tent on Wenatchee Avenue near Arlberg Sports, 25 N. Wenatchee Ave., Wenatchee. Check in at the start line.

### **Downtown Wenatchee Criterium day-of Registration and packet pickup**

Saturday, May 6, 2017

2 to 3:30 p.m. \*

Registration table at Arlberg Sports

25 N. Wenatchee Ave.

Wenatchee, WA 98801

**\* Junior 10-14 Men & Women registered for Criterium and/or Waterville Road race must register or pick up their packet at 2:00pm**

**\* For all other races, you must register and/or pick up your packet at least 30 minutes prior to your race time OR by the close of registration (3:30pm) whichever comes first.**

### **DRIVING DIRECTIONS**

From race headquarters (25 N. Wenatchee Ave. Wenatchee): None. You are right there!

### **START TIMES**

<b>CATEGORY</b>	<b>START</b>	<b>FINISH</b>	<b>TIME</b>
Junior 10-14 Men & Women	2:30 p.m.	2:45 p.m.	15 minutes
Cat. 3/4/5 Women	2:50 p.m.	3:20 p.m.	30 minutes
Junior 15-18 Women	2:50 p.m.	3:20 p.m.	30 minutes
Masters Men 40+ Cat 4/5	3:30 p.m.	4:15 p.m.	45 minutes
Cat. 4/5 Men	4:25 p.m.	5:10 p.m.	45 minutes
Junior 15-18 Men	4:25 p.m.	5:10 p.m.	45 minutes
Community Race	5:50 p.m.	6:30 p.m.	40 minutes

## COURSE MAP



## RACE NOTES

- The Pit will be located at the start-finish line across from the announcer's truck. Wheel pit is neutral. Teams will be required to provide at least one set of wheels for the pit. Riders can never ride backwards on the course to reach the pit or they will be disqualified from the Criterium.
- Lapped riders may be pulled as determined by the chief referee's discretion. Riders who withdraw on their own will not be placed and will be scored as DNF. Riders who withdraw from the race on their own should notify an official so can be tracked. This is for safety as much as it is for scoring.
- Primes in the race will be for cash, swag and time bonuses. The exact number of each will be determined at race time.
- Enjoy the Tour de Bite & Brew event being held in conjunction with the Tour de Bloom Criterium. These beer gardens and food booths are located on Wenatchee Avenue at prime locations along the Criterium course.

## RACE 3: PRO BUILD WATERVILLE ROAD RACE

The Road Race incorporates roads located in the classic Waterville wheat country. The course is flat with rollers. Please note that the roads used for this stage are open to traffic. For a course map, see below.

### DATE

Sunday May 7, 2017

### LOCATION (START, FINISH AND RIDER SIGN-IN)

Douglas County Fairgrounds, 601 N. Monroe St., Waterville, WA

#### Waterville Road Race day-of Registration and packet pickup

Sunday, May 7, 2017

7 to 8 a.m.

Douglas County Fairgrounds 601 N. Monroe St.

Waterville, WA 98858

**Sign in: At start line, 15 minutes prior to the start of the race.**

NOTE: The finish this year will be on Airport Road rather than at the Fairgrounds.

### DRIVING DIRECTIONS

From race headquarters (25 N. Wenatchee Ave. Wenatchee): Get on Wenatchee Avenue and head north for 3 miles before getting on Highway 2/97 heading east. Continue for about two miles, crossing the Columbia River on the Odabashian Bridge. At the intersection of Highway 28 (Sunset Highway), take a left and continue north on Highway 2/97. Drive about 11 miles before taking the Highway 2/Waterville exit. Continue for 9.5 miles until reaching the town of Waterville. Drive into town and get on Central Avenue. From there, take the following streets to reach the Douglas County Fairgrounds: Right on Locust Street, left on to Chelan Avenue, right on E. Third St., left onto Monroe Street. The address is 601 N. Monroe St.

### START TIMES

CATEGORY	START	MILES
Cat 4/5 Men and Junior 15-18 Men	9 a.m.	34
Masters Men 40+ Cat 4/5	9:05 a.m.	34
Cat. 3/4/5 Women and Junior 15-18	9:15 a.m.	34
Junior 10-14 Men & Women	9:20 a.m.	11

**Note:** Podiums to be 30 minutes after first place crosses the line.

**Parking:** Parking for the Road Race is available directly across from the fairgrounds. Overnight camping is not allowed. There will be no parking allowed within 200 yards before or after the finish line.

## COURSE MAP



## RACE NOTES

- Please bring an extra set of wheels. Wheels are wheels in/out unless declared neutral by race official.
- Centerline rule will be strictly enforced.
- Staging for the road race will be on the road in front of the entrance to the fairgrounds.
- The feed zone will be at the juniors turnaround area. Feed is on second lap only.

**Note:** As a matter of safety, health, and/or well-being of the riders, if the temperatures exceeds 80 degrees and at the discretion of the Chief Referee or Race Director, riders may be able to get water hand-ups from the race caravan. Race day weather will dictate.