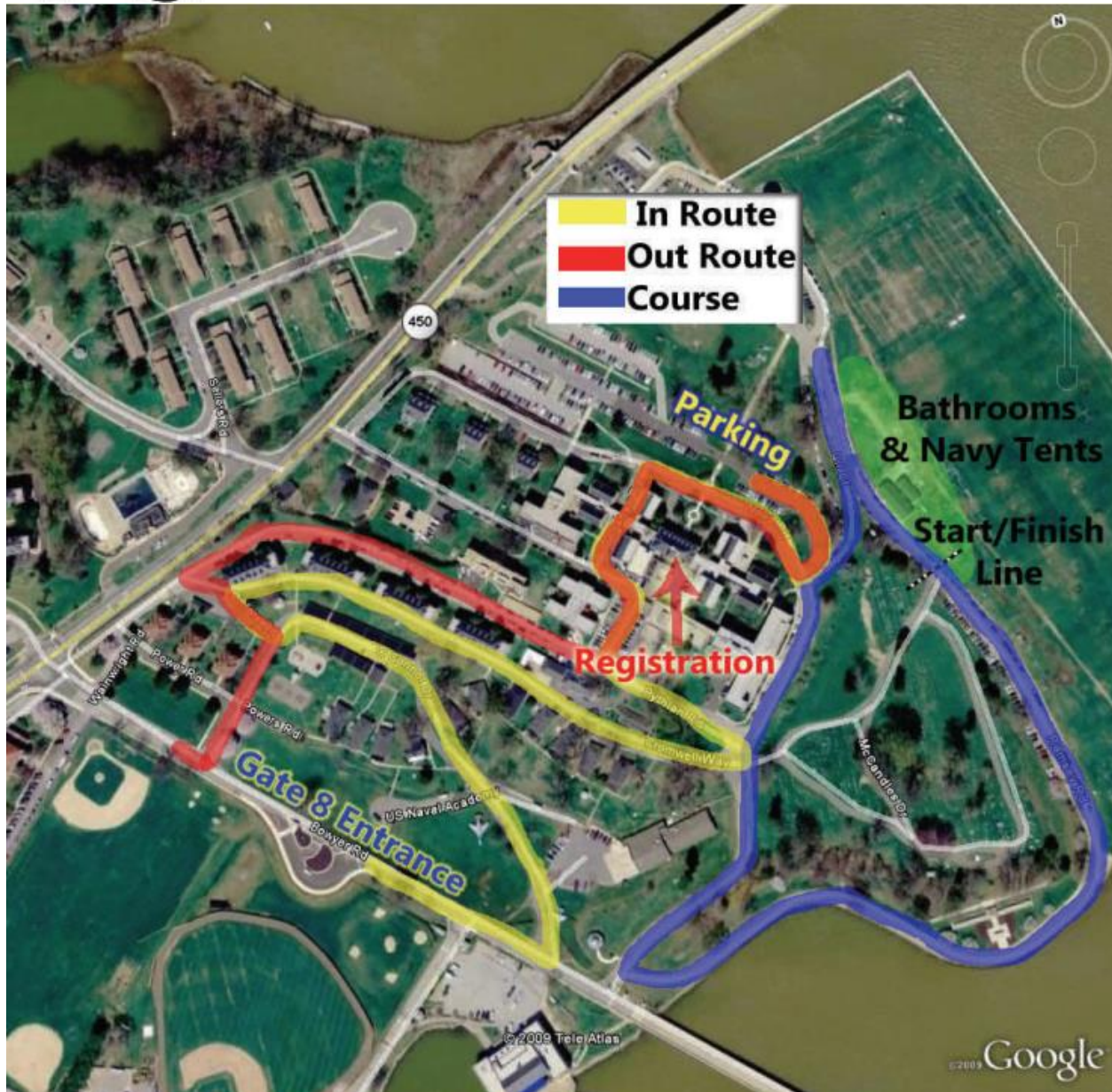




Course Map





Held under USA Cycling permit 2016-1499:

COLLEGIATE



Naval Academy Cycling Presents Hospital Point Criterium

April 10th, 2016 (Sun) at Annapolis, MD

REGISTRATION	0800				
Category	Start	Duration	Prize Value	Field Limit	Fees
Men's D	0900	30 min	Omnium Points	50	\$15
Men's C	0945	30 min	Omnium Points	50	\$15
Men's B	1030	45 min	Omnium Points	75	\$15
Women's B/C	1215	30 min	Omnium Points	75	\$15
Women's A	1300	45 min	Omnium Points	100	\$15
Men's A	1400	60 min	Omnium Points	100	\$15

Address: United States Naval Academy, Hospital Point, 250 Wood Road, Annapolis, Maryland

Directions: From Rt. 50 East, take exit 27 (Rt. 450 toward Naval Academy), staying right and following signs. At the end of ramp at the t-intersection, make a left turn onto a divided road (there will be a small sign on the other side of the road pointing to the left for the Naval Academy). Follow this road, crossing over the Severn River Bridge. At the first light after the bridge, make a left turn into the Naval Academy Gate and onto campus. Stop at the gate and tell the guard you are here for a bike race and follow the signs to parking.

Course: The Hospital Point Crit is a 0.75 mile long loop with highly technical pieces, including a hairpin turn in the final part of the lap. Course includes an uphill portion and a downhill leading into the sharp turn. Exciting breakaways and race antics are guaranteed.

Logistics: Race-day registration opens at 0800 and closes 15 min prior to posted start times. Pre-registration through USA Cycling is highly encouraged. \$5 late fee will be enforced.

Other Important Information: Race takes place on a governmental installation, so participants will be required to coordinate with the Naval Academy Cycling Team for a guest pass to gain access.

****Note**** "Collegiate fields are open only to full-time collegiate students with valid USAC Collegiate licenses and full-time high school students, 15 years or older, with valid USAC Junior licenses. Juniors will only be allowed to participate in events for which they are qualified based on USAC Rule 6D1. Jerseys and bibs for all such riders must feature school names and/or logo, or be generic blank kits; non-scholastic club and trade team kits are not permitted. In addition, new non-collegiate women racers with 1-day or first time Category 4 licenses may enter Collegiate Women's C or D events. USA Cycling licenses will be available for purchase on-site. Consult the ACCC website at <http://www.acccycling.org> for more information on categories, eligibility, licensing, and other general questions"



More Information:

<http://navycycling.wix.com/navycycling>

Or Contact:

[Jin Soo Park m174770@usna.edu](mailto:Jin_Soo_Park_m174770@usna.edu)

[Everett Hamilton m172436@usna.edu](mailto:Everett_Hamilton_m172436@usna.edu)

**Only the above listed races are permitted and sanctioned by USA Cycling.
No other races or activities at the event are sanctioned by USA Cycling.**