



# LAMBRA ROAD RACE CHAMPIONSHIPS



**August 27th, 2017**

Flora, MS

Held under USAC Permit #2017-2445

START TIME	CATEGORY	LAPS	DISTANCE	FEE	LATE	DAY OF REG
	WAVE 1					
8:00	<b>CAT 5</b>	4	45	\$30	\$35	\$40
8:05	<b>WOMEN 1/2/3 &amp; 4/5</b>	4	45	\$30	\$35	\$40
8:10	<b>JUNIOR 15-18</b>	3	35	\$20	\$25	\$30
8:10	<b>JUNIOR 9-14</b>	1	11.4	\$20	\$25	\$30
	WAVE 2					
10:30	<b>CAT 1/2 &amp; Cat3</b>	6	69	\$30	\$35	\$40
10:35	<b>CAT 4</b>	5	57	\$30	\$35	\$40
10:40	<b>CAT 40+/55+</b>	5	57	\$30	\$35	\$40

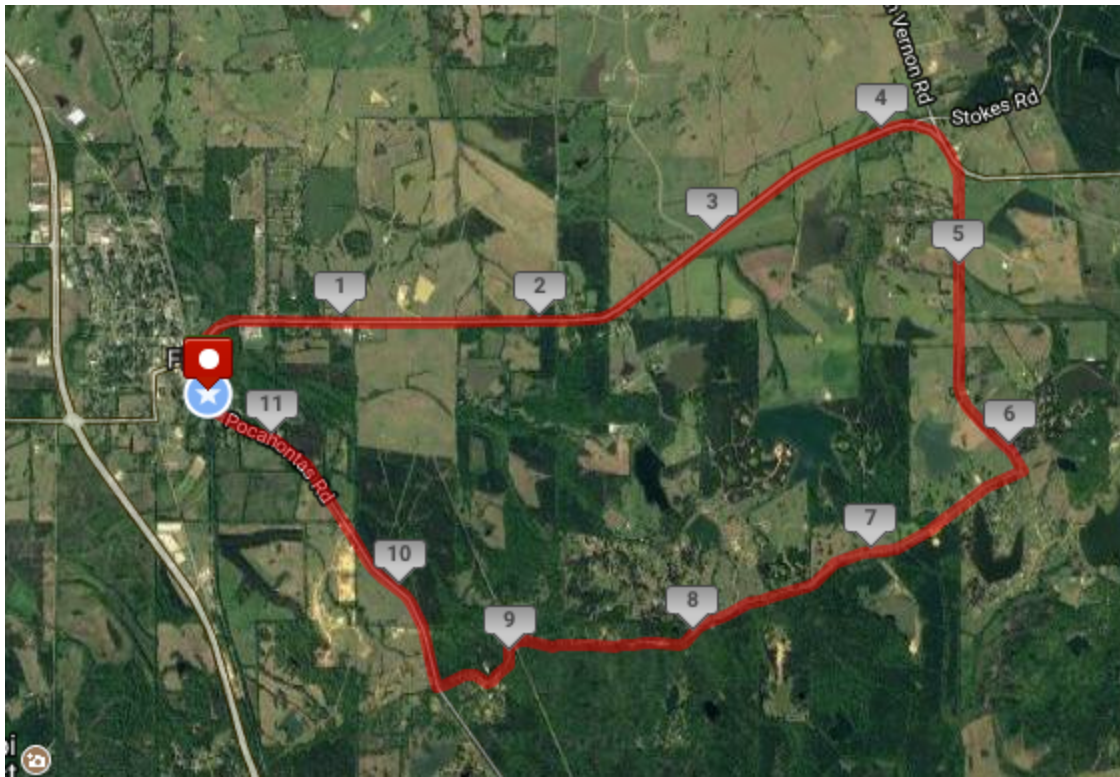
District Championship medals will be awarded to the top 3 in these categories:

WAVE 1: **Category 5, Women 1/2/3, Women 4/5, Junior 9-14, Junior 15-18**

WAVE 2: **Cat 1/2, Cat 3, Cat 4, Masters 40+ and Master's 55+**

## REGISTRATION

- <https://www.usacycling.org/register/2017-2445>
- Early registration ends 8/19/17 12pm CDT
- Online registration closes 8/25/17 10pm CDT
- Race day registration 7:00 am – 7:45 am for WAVE 1 and 9:30 am – 10:15 am for WAVE 2  
Located at the Start/finish on Railroad Avenue, near 500 Railroad Ave., Flora, MS



#### COURSE

- The race will start and end in Flora, MS.
- 11.4 mile laps run clockwise.
- <http://www.mapmyride.com/routes/fullscreen/1695530282/>