



Race #2 in the BikeReg.com MABRAcross Super 8

Put on by the Winchester Wheelmen

Online Registration Opens August 21, 2011 @ 8pm!

Sunday October 2nd, 2011

1300 South Pleasant Valley Rd., Winchester, VA, 22601

Hit us up on FaceBook @ Winchester AppleCross for the latest scoop.

Preregister at www.bikereg.com. Online registration closes on 9/29/2011 @ 8pm!

THE FIRST 300 RESITRANTS GETS A FREE PINT GLASS!!!!

The Venue: Jim Barnett Park (<http://www.winchesterva.gov/>). No alcohol is permitted in the park. The park opens at dawn. Most of the race course will be set up the evening before and will be available for pre-riding. The park closes at dusk. The course is open for warm-ups after the last active racer passes the start/finish line on the final lap. Warm-up riders are not allowed to pass an active racer and should not pass through the start/finish area. Riding on the course during an event at any other time is prohibited and will result in disqualification.

Parking: Please see the attached map for designated parking areas. Parking is free.

Amenities: Showers and indoor restrooms are available in the Memorial Building (see map). Race announcer is Bill Schieken of www.cxhairs.com/. Back for a second year is Greenwood Grocery and Deli serving a variety of items. There park has playground equipment onsite for children and adult. We also will have free drinking water.

Course Description: Asphalt start and finish, hilly with two steep hills: the Belgian Wall and the Cemetery Slog. There are varying technical turns with several off camber sections. Typically there is little mud even after rain, one high speed downhill on asphalt. The Belgian Wall will be a real run-up this year! No Spiral of Death (this year). Double sided pit.

The Event: This is a MABRAcross Super 8 race. Consult the tables below to confirm your race class and category according to your USAC license. The event will be held under USAC permit # pending. One day licenses will be available for Cat 4 events the day of registration. Prizes will be awarded as soon as possible after each event. Please remain near the podiums following your race if you place. Below you will find the races available to you in your USAC category.

Time	Category*	Duration	Entry	Prizes/Places
8:30AM	Beginner Men Cat 4	30 min	\$25	Prizes/3 places
9:15 AM	Beginner Women Cat 4	30 min	\$25	Prizes/3 places
9:16AM	Junior Girls 15 - 18	30 min	\$10	Medals/5 places
	Junior Boys 10 - 14	30 min	\$10	Medals/5 places
	Junior Girls 10 - 14	30 min	\$10	Medals/5 places
10:00 AM	Lil' Belgians		FREE	Prizes/ALL
	Masters Cat 3,4 35+ 45+	40 min	\$25	Prizes/5 places
11:00 AM	Masters 45+ Cat 1,2,3	45 min	\$25	Prizes/5 places
11:01 AM	Masters 55+ Cat 1,2,3	45 min	\$25	Prizes/5 places
11:02 AM	Single Speed Open	45 min	\$25	Prizes/3 places
12:00 PM	Women Cat 1,2,3	40 min	\$25	\$600/7

12:01 PM	Juniors 15-18 Open	40 min	\$10	Medals/5 places
12:02PM	Women Cat 3,4	40 min	\$25	Prizes/5 places
1:00 PM	Masters 35+ Cat 1,2,3	45 min	\$25	Prizes/5 places
2:00 PM	Men Cat 3,4	45 min	\$25	Prizes/7 places
3:00 PM	Cat 1,2,3 Men	60 min	\$25	\$900/10 places
4:15 PM	Tandem Open**	30 min	\$10 per rider	Prizes/3 places

** At least one rider has to be an adult. One rider can enter by BikeReg, both riders must sign waiver and have both must be possess a valid USAC license or pay for one-day license. In an adult/youngster combo, the youngster has to be at least 10 and possess either an annual or one-day licensee. Only tandem bicycles are permitted - a standard bike with a trail-along is not a tandem and may not be used in the tandem event.

*The 125 rider limit is for the combined field in a race. Registration will close once the limit has been reached by any combination of classes within the field.

Race Registration: USAC Road or Mountain license required. One-day licenses can be purchased for \$10 on race day; please note "one day" under license when you register online if you will need one. Only Cat 4 riders can race on a one day license, please renew ahead of time and bring your license (or a receipt from USA Cycling) if you plan on racing in a higher category race.

There will be a \$10.00 day-of-registration fee, except for juniors. Save money, pre-register! We will waive the fee if you're registering for a second (or third) race on the day. Day of registration for a second or third race is ONLY \$10 if there are spots remaining. Racing age for all categories is based upon the rider's age on Dec. 31st, 2012. Onsite registration opens at 7:00 AM and closes 30 minutes before each race. Race day registration shall close 30 minutes prior to each field start. Any current National Cyclo-Cross Champions shall be granted a free entry but must wear their national jersey in the class which it was won.

Call Ups: All Call ups will be based on the most recent MABRAcross Super 8 series standings. For the first race of each season, call-ups will be based on the previous year's final standings. Call ups will be 2 rows of 8 riders, the top 16 in each series class. Call ups will fill the start as specified in the UCI rulebook start grid. All categories have 4 spot in the 3rd row, which are reserved for promoter's discretion call-ups.

Medical/First Aid: There will be EMT/MD's available. First aid will be available at the registration shelter. ** The nearest hospital is Winchester Medical Center, 1840 Amherst St., Winchester. (540)536-8000. Winchester Wheelmen who are MD's or are ACLS trained will be wearing scrub tops with the race logo.

Points: Points are awarded for Series ranking to the following MABRA categories – Men Cat 1,2,3; Women Cat 1,2 3; Men 3/4; Women 3/4; Masters Men 35+ 1/2/3; Masters Men 45+ 1/2/3; Masters Men 55+ 1/2/3/4; Masters Men 35+/45+ 3/4; Jrs 15-18. Cat 4 Men, Cat 4 Women will not receive Series ranking.

Event Staff: Organizers: Kenny Morris, Steve Breedon

Registration Manager: Shawn Carrico

Organizer address: 112 Rebels Circle, Winchester, VA 22601

Media Director: Ken Tenney

Sponsoring Club: Winchester Wheelmen

Announcer: Bill Schieken

Chief Referee: Kirk Leidy

Chief Judge: Caitlyn Long

Event contact information: www.MABRAcross.com, www.winchesterwheelmen.org, Steve Breedon drsbreedon@gmail.com , (540)664-6338.

8/12/2011 6:28:35 pm

INDOOR
BATHROOMS
SHOWERS

FREE
PARKING

FREE
PARKING

FOOD
SHELTER

TEAM
TENTS

START
FINISH

Barriers

PIT

Belgian
WALL

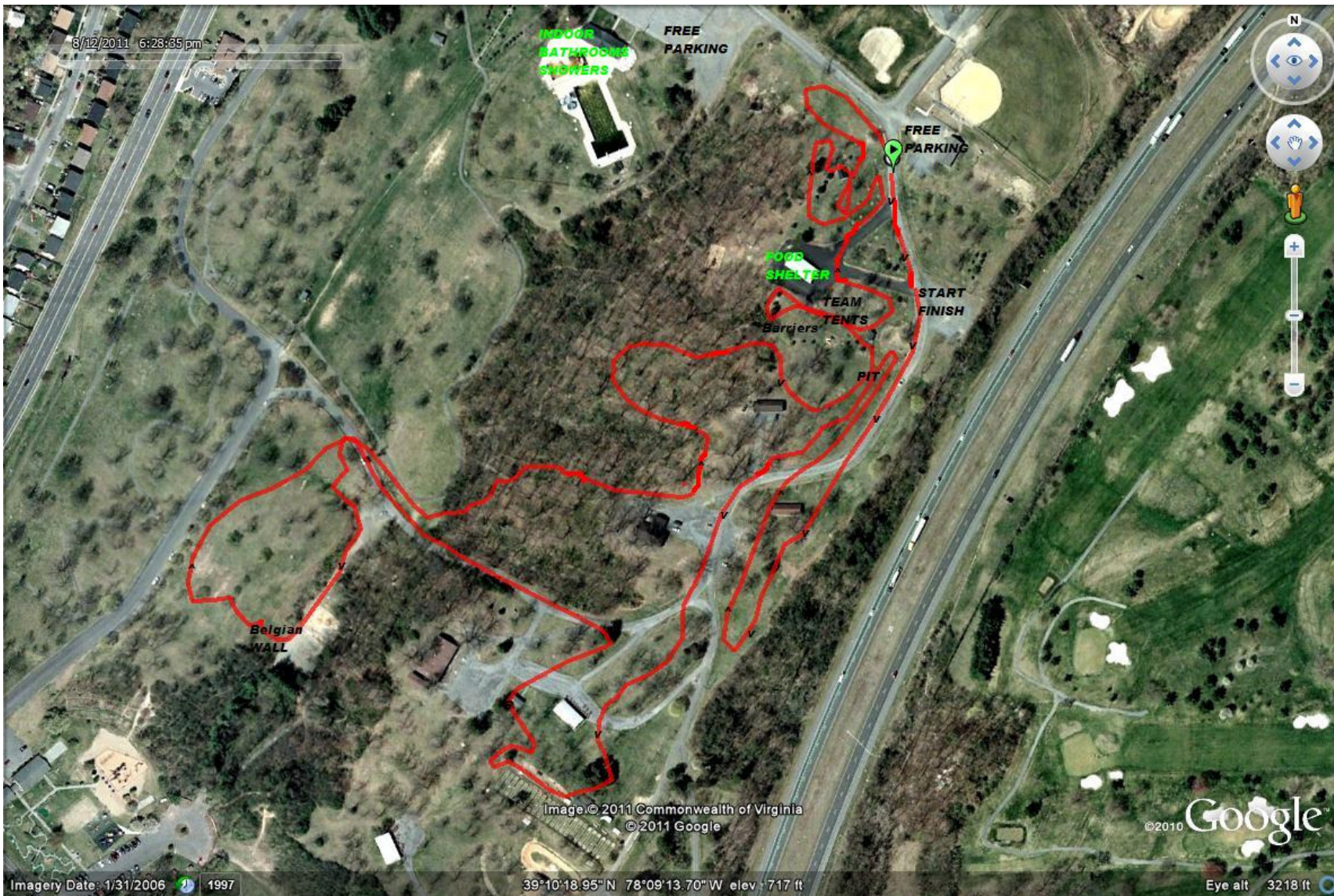
Image © 2011 Commonwealth of Virginia
© 2011 Google

©2010 Google

Imagery Date: 1/31/2006 1997

39°10'18.95"N 78°09'13.70"W elev: 717 ft

Eye alt 3218 ft





Richard Taliaferro, DDS and Steven Breeden, DMD