

IC3 Dash for Cash

The 20th Annual International Christian Cycling Club's

Dash for Cash Presented by **Hammer Nutrition**

(<http://hammernutrition.com>)

June 4th, 2011

Register at **SportsBase Online**

(<https://www.sportsbaseonline.com/events/index.xhtml?categoryId=25879>)

Category	Start	Field	Fee	Length	Prizes/Places	Dash for CASH
Elite 5	7:35	50	\$25	40 min	none	none
JRs B/G 15-16*	8:20	*	\$15	35 min	\$50/3 Places	Dash or Cash*
JRs B/G 13-14*	8:20	*	\$15	35 min	\$50/3 Places	Dash or Cash*
JRs B/G 10-12*	8:20	*	\$15	35 min	\$50/3 Places	Dash or Cash*
Women Elite 4	9:00	50	\$25	40 min	\$200/3 Places	Dash for Cash***
Women Elite Pro,1,2/3**	10:45	100	\$25	45 min	\$300/ 3 Places \$150/3 places	Dash for Cash***
Handcycling Open	11:35	50	\$20	30 min	\$100/ 3 Places	None
Kids Race 4-10yrs†	12:05	50	Free	5 min	Medals	
Masters 45+ / 55+** 1,2,3	12:10	100	\$25	40 min	\$150/3 Places \$100/3 Places	Dash for Cash
Masters 35+ (1,2,3)	12:55	120	\$25	50 min	\$300 / 6 Places	Dash for Cash
Elite 3	1:50	120	\$25	50 min	\$300/6 Places	Dash for Cash
Elite Pro,1,2,3	2:45	120	\$30	75 min	\$500/ 6 Places	Dash for Cash
Elite 4	4:05	120	\$25	40 min	\$250/6 Places	Dash for Cash
Masters 35+ (4,5)	4:45	75	\$25	45 min	\$250/ 6 Places	Dash for Cash

*Total for all junior fields is limited to 60 riders, Dash for Cash 5 laps - (10) per lap

**Fields Picked Separately for final prizes

***25 racers Min Field Size to qualify for \$10 Dash for cash Lap

† Children's Race is run off course in traffic-free zone in front of spectators

Dash for Cash laps will begin on second lap with max 20 Dash for Cash(\$10)Per Lap

\$100 Cash prize to the top placing U23 Rider in the Elite Pro/123 race.

USHandCycling.org is about creating an integrated cycling program for those with and without disabilities. If you have a handcycle you are eligible for this race. IC3 is proud to offer this highly charged form of racing.

For **Guest Housing** please contact Tania Smith at 925.462.2626

Registration: Opens 7:00 AM – Closes 20 min. prior to each race. For late registration add \$5 (postmarked after 5/28) 2nd race is \$15. Current District Crit Champions race for \$3 (must pre-reg for discount). Registration available online at SportsBaseOnline.com.

Prizes: Minimum half cash (Primes included).

Rules: Licensed riders only. One day (Cat 5 Men and Cat 4 Women Only) and Annual USAC applications available at registration

RACER BIOS

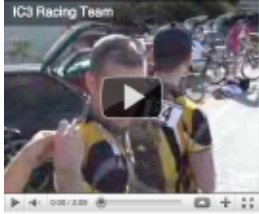
Directions: Directions: From I680/I580 Interchange-take 580 East. Exit Hopyard South. Left on Owens. Right on Willow. Course is 2 blocks from the Pleasanton/Dublin Bart Station. Registration is at the corner of Willow and Gibraltar. Please park and warm up in the designated areas. For race information call Darryl Smith at 925.462.2626.

Dash for Cash primes are given to the first racer across the finish line beginning on the second lap and lasting 20 laps at \$10/lap (see category for amount details). Note: Free Lap Rule in effect- no neutral support (bring wheels). The course is .9 mile, clockwise, flat, fast, four right-hand turns and excellent pavement following Willow, Gibraltar, Hacienda, and Stoneridge roads.

Held under USA Cycling event permit, rules, and insurance

Entry fee includes USAC \$3 insurance & \$1 NCNCA surcharges but not on-line service charges.

[Edit this entry. \(http://norcal.christiancycling.com/wp-admin/post.php?post=205&action=edit\)](http://norcal.christiancycling.com/wp-admin/post.php?post=205&action=edit)



ABOUT

Based out of Pleasanton California, this club is part of the larger national club based out of Colorado. We are the NorCal Spoke and would love to hear from you. While you will find us as an active body amongst the race scene you will also find us fixing bikes at Shepherd's Gate or gathering at various locations for dinner, fellowship and the study of God's word.

[Read more about us \(http://norcal.christiancycling.com/about/\)](http://norcal.christiancycling.com/about/)

CREDITS

Design by [Trefethen Studios](http://trefethenstudios.com)

<http://trefethenstudios.com>

[Subscribe to entries](#)

<http://norcal.christiancycling.com/feed/>

[Subscribe to comments](#)

<http://norcal.christiancycling.com/comments/feed/>

All content © 2011 by NorCal IC3

loading